

Design Council

**Investing in facilities
+ infrastructure**

Healthy Place

**Executive Director
Strategy Design
and Innovation**

Agile
Expert
Creative
Purposeful
Collaborative
Pioneering
Visionary
Proud
Open

Agile
Expert
Creative
Purposeful
Collaborative
Pioneering
Visionary
Proud
Open

Agile
Expert
Creative
Purposeful
Collaborative
Pioneering
Visionary
Proud
Open

About Design Council

Better places

Design
Council

Making
life better
by design.

Better products

Design
Council

Making
life better
by design.

Better processes

Design
Council

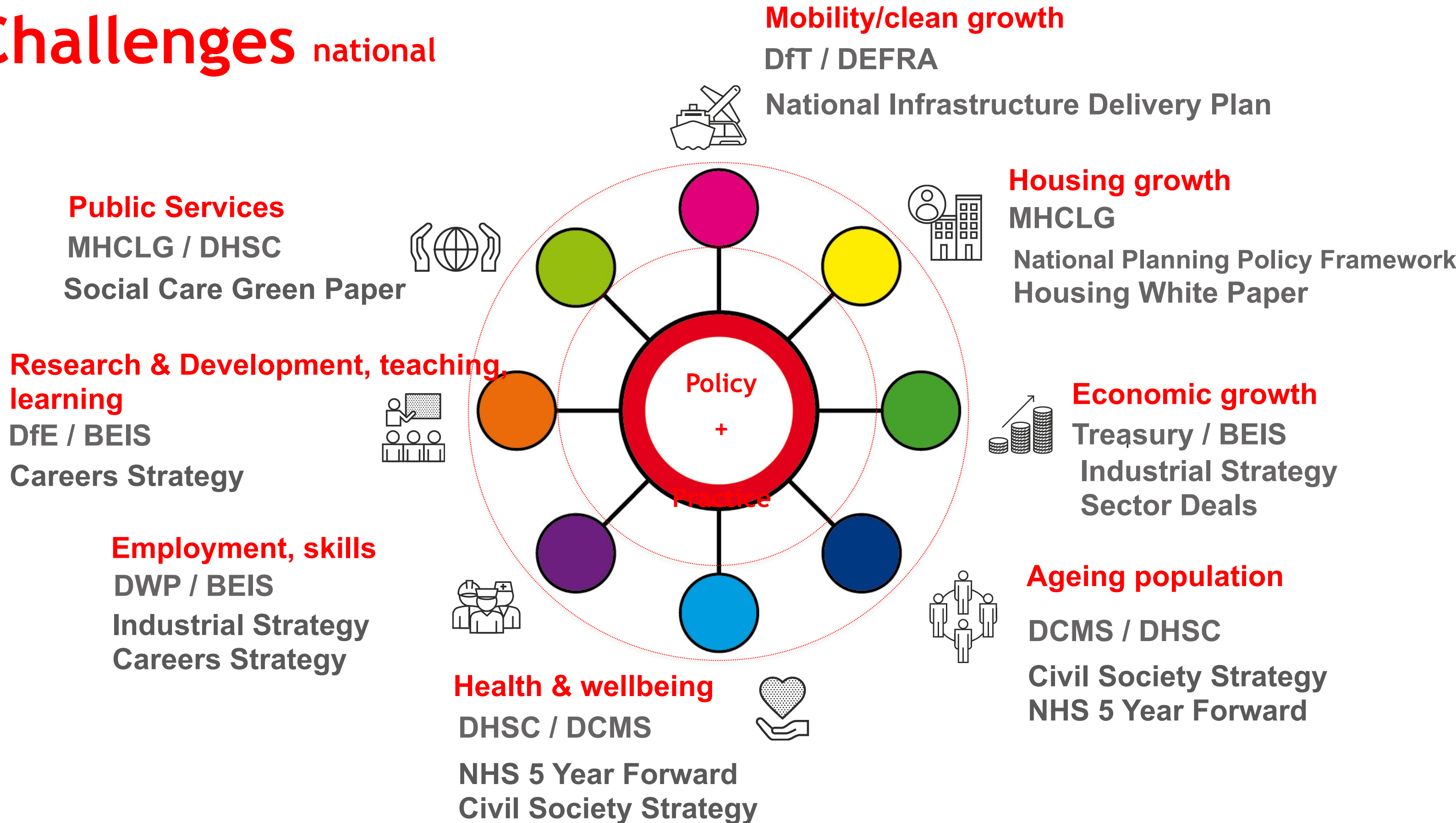
Making
life better
by design.

Better performance

Design
Council

Making
life better
by design.

Challenges national



Active Cities and Places

Economic value

- Active economies encouraging walking and cycling confer a diverse range of economic benefits at a wide range of scales including reduced infrastructure cost, boost in local spending, enhanced job creation.
- Investing in better streets and places can provide a competitive return on investment £35.50 return on £1 invested (DfT 2016).

Health and wellbeing

- Total direct costs of inactivity to the NHS was estimated to be £1 billion (DfT 2015) Overall the wider cost to the UK of Coronary Heart Disease (CHD) alone is estimated at £6.7billion per year (Townsend et al, 2012)

Environment

- In the UK, outdoor air pollution is linked to 40,000 premature deaths every year (Royal College of Physicians, 2016).

Place making and social cohesion

- One in six homes owners preferred neighbourhoods that offered a shorter commute and local social infrastructure when compared to larger plots with more limited walking opportunities. (Raje & Saffrey, 2016, Arup 2016)



NHS faces bed-blocking crisis

Hospitals will be filled with elderly patients denied local authority care by the cuts, warn health chiefs

By J. and F.

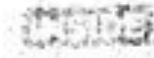
Loss of grants to charities threatens services

Local government loses £1.3b

These cuts are the deepest. The Department for Communities and Local Government has announced a 51 per cent cut in its budget for that measure.

affordable homes, it is about to get worse. Separately, a 26 per cent cut in the local government grant to £24.2bn will leave councils gasping. Local authorities will have to slash "discretionary" services such as parks, leisure centres, swimming pools and libraries, with many likely to be shut down.

the charge will not be available. Calling for a greater co-ordination of council care services and NHS



'Yes, for a lot of people it is going to be very difficult' Danny Alexander on the cuts p12

facilities, he says: "When it comes to the care of the most vulnerable in our society, it really is essential that the NHS and local authorities are in it together."

His warning coincides with the most explicit admission yet from a Cabinet minister that

cuts in public spending will cause genuine distress. Danny Alexander, the Chief Secretary to the Treasury, says in an interview with the *Telegraph* that a lot of people will be affected. Mr Edwards' response to the review, which is to address the port for a reduced four year plan cuts.

MPs warned of savage cuts to care for old and disabled

- 'Hundreds of thousands' affected
- Vulnerable could lose home support

was currently classified as "substantial" it would mean no one living in their own home would be able to access such help. "[Care] would only be for those so fragile they are in a residential home."

He said that many elderly people valued seeing a care worker because helped alleviate loneliness. "For many older people it is a health and safety

Small rise for health honours pledge

In addition, the NHS will have, in effect, take over the purchasing of NHS care by 2013, choose to use the private sector to commission services. John Appleby, chief economist at the King's Fund health think tank, said: "That may be a big pressure on the end."

NHS boost likely to go on social care

Budget increase

By Nicholas Timmins, Public Policy Editor

A significant part of the NHS's promised budget increase

pressures", he said. A small increase would be insufficient to meet rising demand as up to £20bn of efficiency savings were being sought and the government was proposing "one of the highest

Adult Social Services has warned that "achieving savings on the scale of 25 to 40 per cent" - the cuts it has in effect been asked to plan for - "is simply not feasible."

"It is clear that NHS money will go into social care, either deliberately or not," Mr Edwards said. Without social care support

the elderly and disabled drawn from hundreds of vulnerable people as a result of cuts to council budgets. Government Association

NHS spending

By Nicholas Public Policy

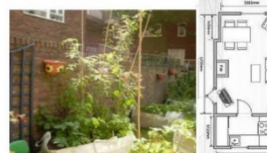
The National Insurance is to rise in the coalition long-term plan. The government has promised a 1 per cent increase in the National Insurance contribution for employers and employees.



London Healthy Urban Development Unit

HUDU Planning for Health

Healthy Urban Planning Checklist



Third Edition
April 2017



Protecting and improving the nation's health

active, every day
An evidence-based approach
to physical activity



Physical Inactivity –
An Integrated Approach

L-PARTY COMMISSION
ON PHYSICAL ACTIVITY



Healthy people, healthy places briefing
**Obesity and the environment:
increasing physical activity
and active travel**

Research summary

**Community green: using local
spaces to tackle inequality
and improve health**



**Estimating Return on Investment
for interventions and strategies
to increase physical activity**

User Guide
May 2014

**Your sector:
share our insight**

Advisory services and software
to the Health, Justice, Education
and Pharmaceutical sectors



London Healthy Urban Development Unit

HUDU Planning for Health

**Rapid Health Impact
Assessment Tool**



**Fair Society,
Healthy Lives**

**The Marmot Review
Executive Summary**

THE NEW CLIMATE ECONOMY

The Global Commission on the Economy and Climate

LSE Cities

LSE
THE LONDON SCHOOL
OF ECONOMICS AND
POLITICAL SCIENCE

NCE Cities – Paper 02

**STEERING URBAN GROWTH:
GOVERNANCE, POLICY AND FINANCE**

Lead Authors: Graham I. Joffee and Philipp Rode
Contributing Authors: Bruno Freixas, Alex's Rosen

CONTENTS

	Page
1 INTRODUCTION	03
PART I STEERING URBAN GROWTH: AN INTEGRATED APPROACH	07
CITIES OF THE FUTURE: COMPACT, CONNECTED AND COORDINATED	07
SHAPING FUTURE CITIES: COORDINATED GOVERNANCE	12
PART II POLICY INSTRUMENTS: FINANCING, PRICING AND FINANCE	22
FINANCING URBAN GROWTH	23

The New Climate Economy

The New Climate Economy Briefing is a product of the Global Commission on the Economy and Climate. It was initiated by seven governments: Colombia, Ethiopia, Indonesia, Kazakhstan, Mexico, Norway and the United Kingdom, as an independent international advisory body. The brief is a product of the NCE Cities project, which is a collaboration between the London School of Economics and the University of Oxford. The brief is a product of the NCE Cities project, which is a collaboration between the London School of Economics and the University of Oxford. The brief is a product of the NCE Cities project, which is a collaboration between the London School of Economics and the University of Oxford.

ABSTRACT

We live in an urban age. Over half the world's population now lives in urban areas, and this will reach 60% by 2030. All the same, our urban areas are not growing as fast as they should. Three groups of cities – the global economy and cities, the global economy and cities, the global economy and cities – are not growing as fast as they should. Three groups of cities – the global economy and cities, the global economy and cities, the global economy and cities – are not growing as fast as they should.

**Londoners Living Near Street
Trees Get Prescribed Fewer
Antidepressants**

The new finding fits with a host of evidence linking urban greenery to mental health.

ERIC JAFFE | @e_jaffe | Jan 15, 2015 | Comments



**Health economic assessment tools
(HEAT) for walking and for cycling**



Tools and user guide, 2014 update

Small Change, Big Impact

A practical guide to changing London's public spaces

Delivering the Healthy Streets Approach

MAYOR OF LONDON



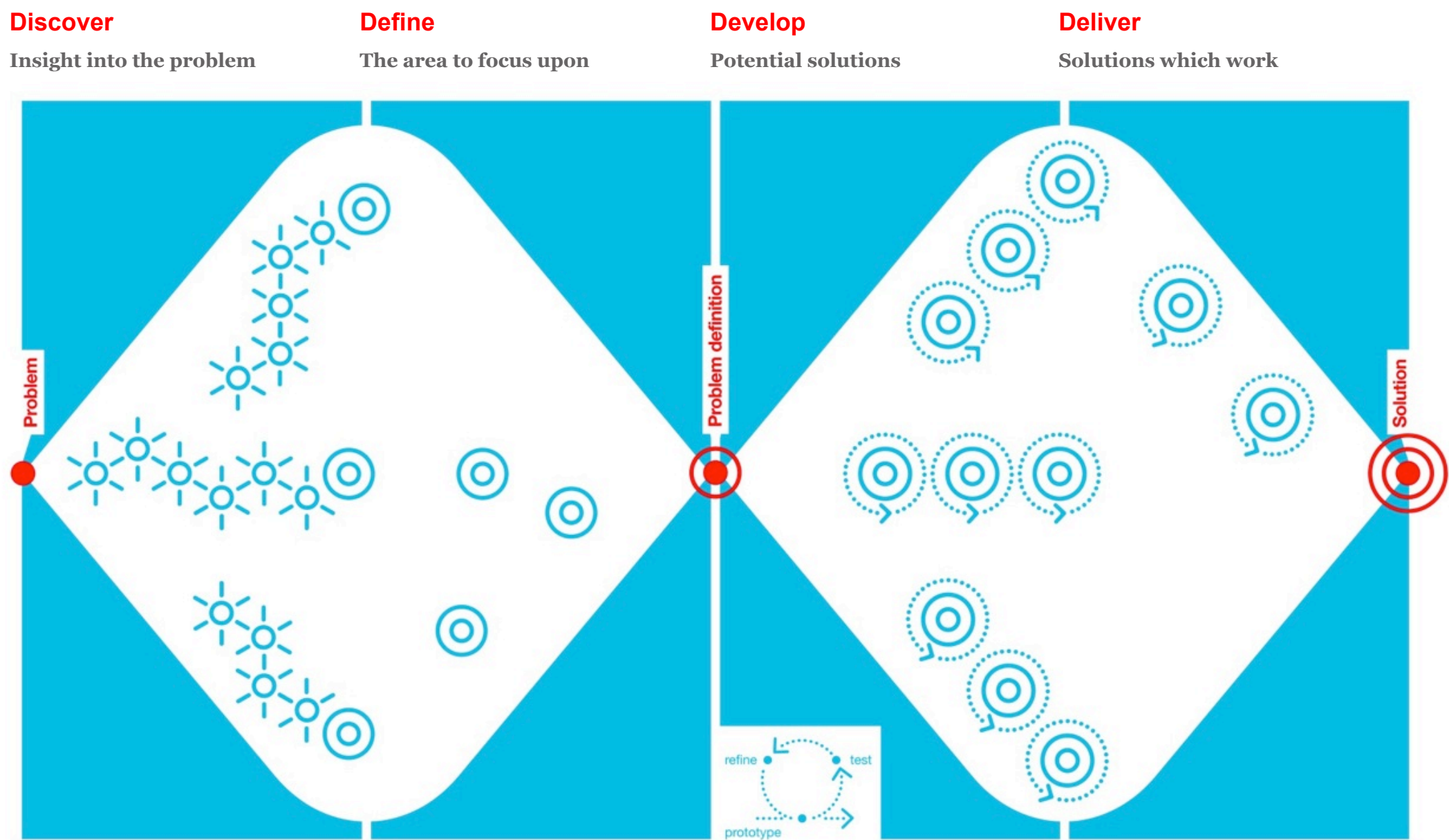
TRANSPORT
FOR LONDON
EVERY JOURNEY MATTERS

Contributors:

Nick Cavill, PhD, MPH, MPPH, Cavill Associates Ltd, United Kingdom
Jesse Engelberg, BA, UCSD / SDSU Public Health Joint Doctoral Program
Klaus Gobel, PhD, James Cook University, Australia
Debbie Lou, PhD, University of California, United Kingdom
Mike Parker, BSc, Progress, JD, MA, UCSD / SDSU Public Health Joint Doctoral Program
Christina M. Thornton, PhD, UCSD / SDSU Public Health Joint Doctoral Program
Aranda Wilson, MSRS, Active Living Research
Carmen L. Cutter, MPH, Active Living Research
Carmen L. Cutter, PhD, The University of Sydney, Australia

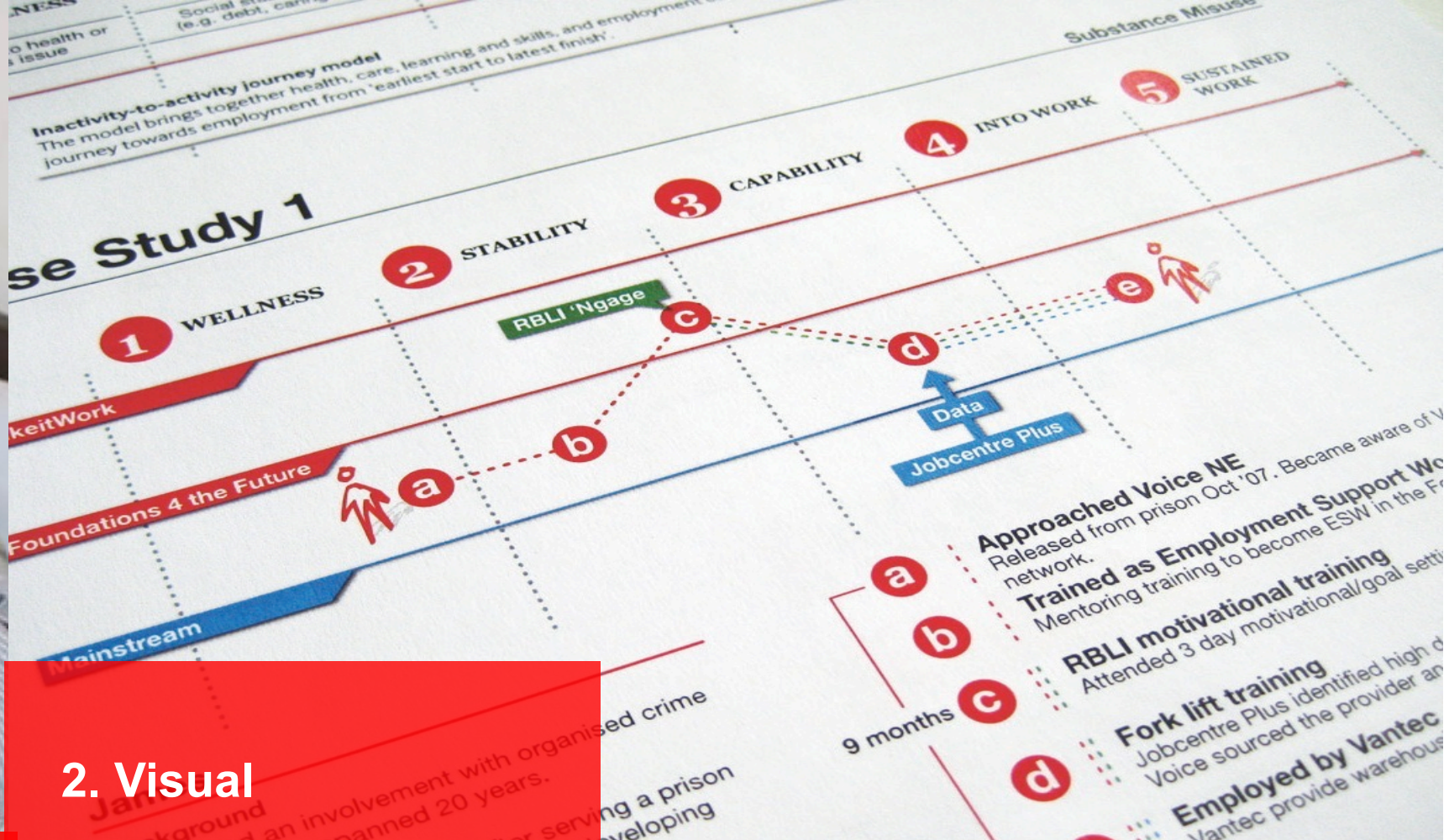
Design develop deliver

Innovating through design

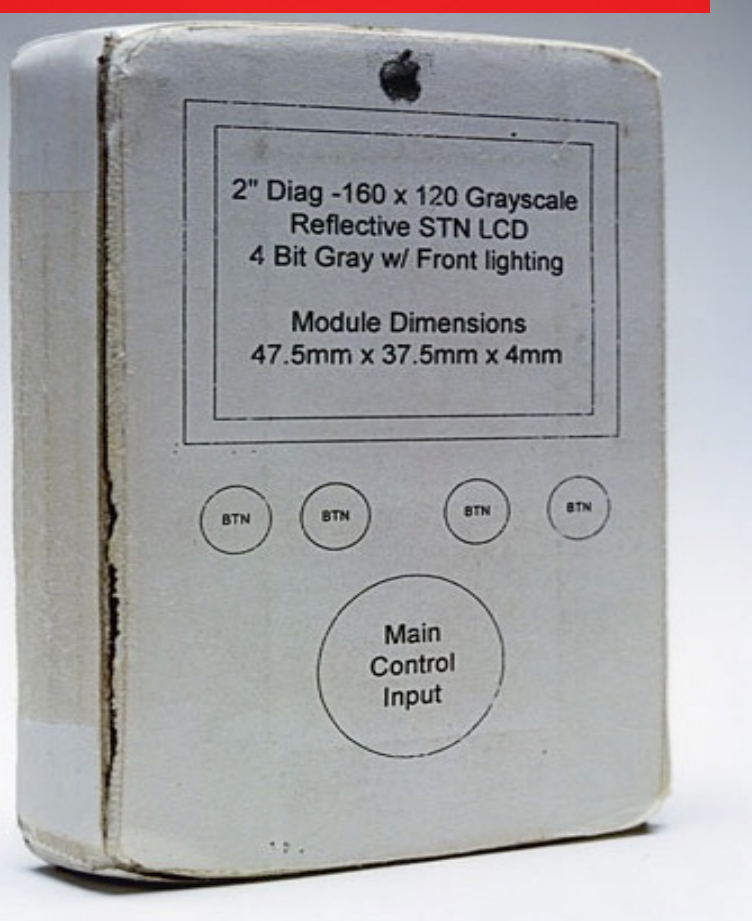




1. Human-centred



2. Visual



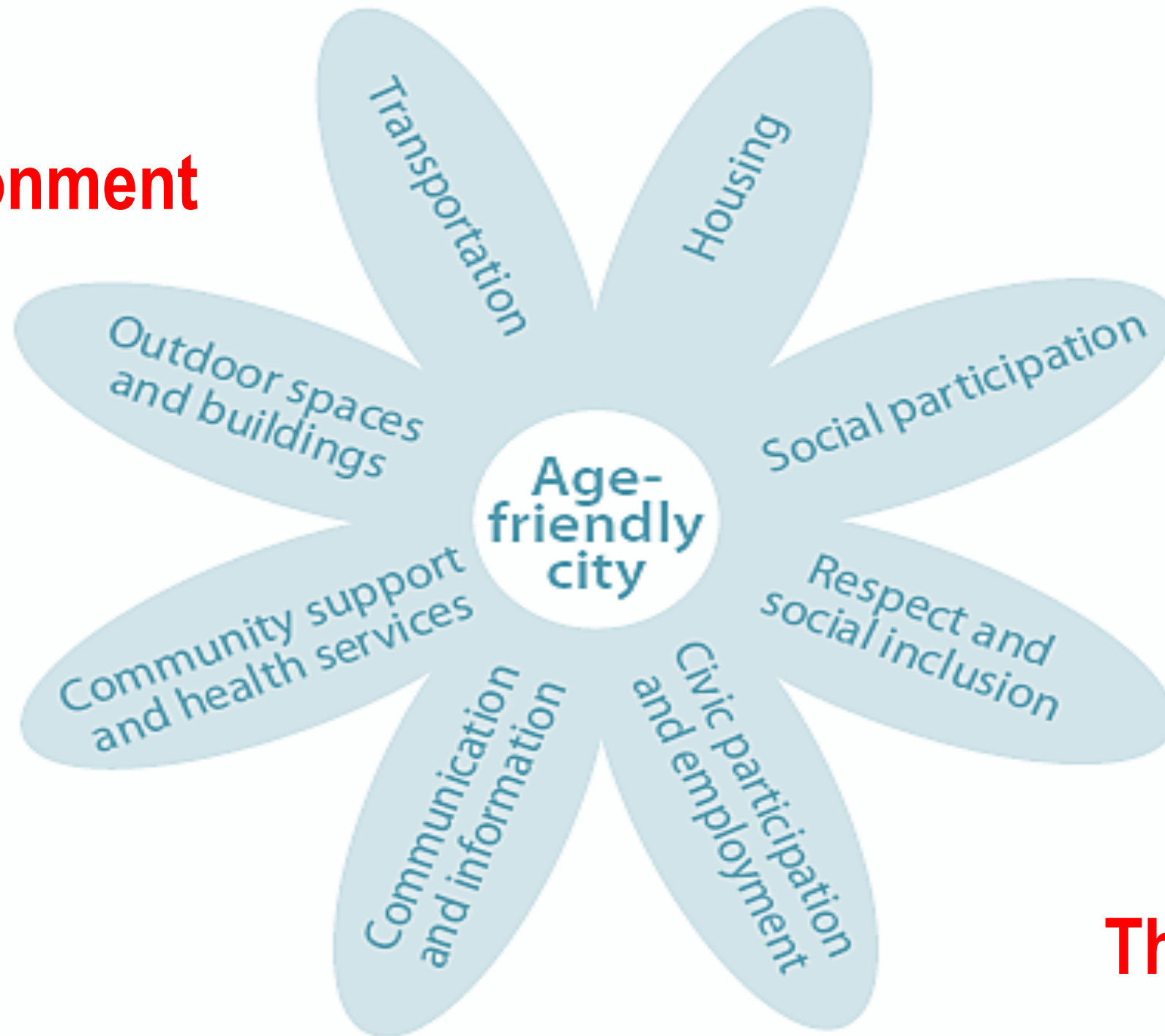
3 Iterate iterate iterate



4 Collaborate

Eight domains of an age friendly city

The Built Environment



The Social Environment

Healthy place making

Why is it an issue?

Cost of preventable illnesses	£11bn p.a.
% of diabetes cases that are preventable	90%
Ageing population by 2026	20.5%
Difference in healthy life expectancy between people living in most deprived and least deprived areas (2014)	19.6 years

Why is it important?

Number of **new homes** built in England in 2017

217,000

Government target for housebuilding

300,000

Projected **increase in population** in UK 2014 – 2039

9.7m

What do we mean by Healthy Places?

“Tackling preventable disease by shaping the built environment so that healthy activities and experiences are integral to people’s everyday lives”.

Key headlines

**Physical
activity**

**Designing
places for
healthy
lives**

**Healthy
food**

**Contact
with nature**

**No
pollution**

**Positive
social
contact**

Physical characteristics of healthy places

Neighbourhoods

Relatively compact, mixed-use

Highly walkable and bikeable

Well-connected by public transport

Shops, services, places to meet,
things to do

Pleasant, safe streets with places to sit

Leafy

Great parks

Human-scale interest and appeal

Clean, orderly and well-maintained

Not dominated by vehicular traffic

Melior Street Community Garden, London Bridge



City Park and Centenary Square, Bradford





Camden Active Spaces, London
Erect Architecture and Land Use Consultants

London Borough of Hackney



Research findings

2018 Parliamentary launch

Design
Council

Healthy placemaking:

The evidence on the positive impact of healthy placemaking on people is clear – so how can we create places that deliver healthier lives and help prevent avoidable disease?

**Social
Change UK**
Research and
marketing that matters



About the Healthy research

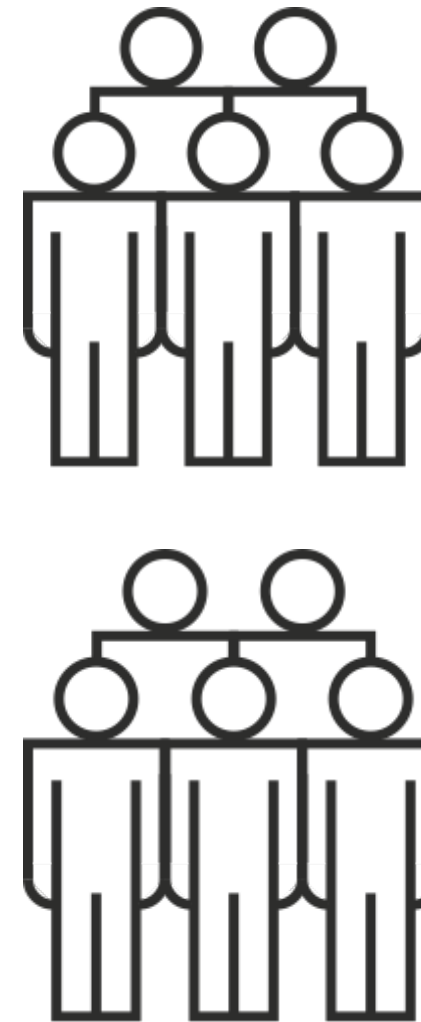
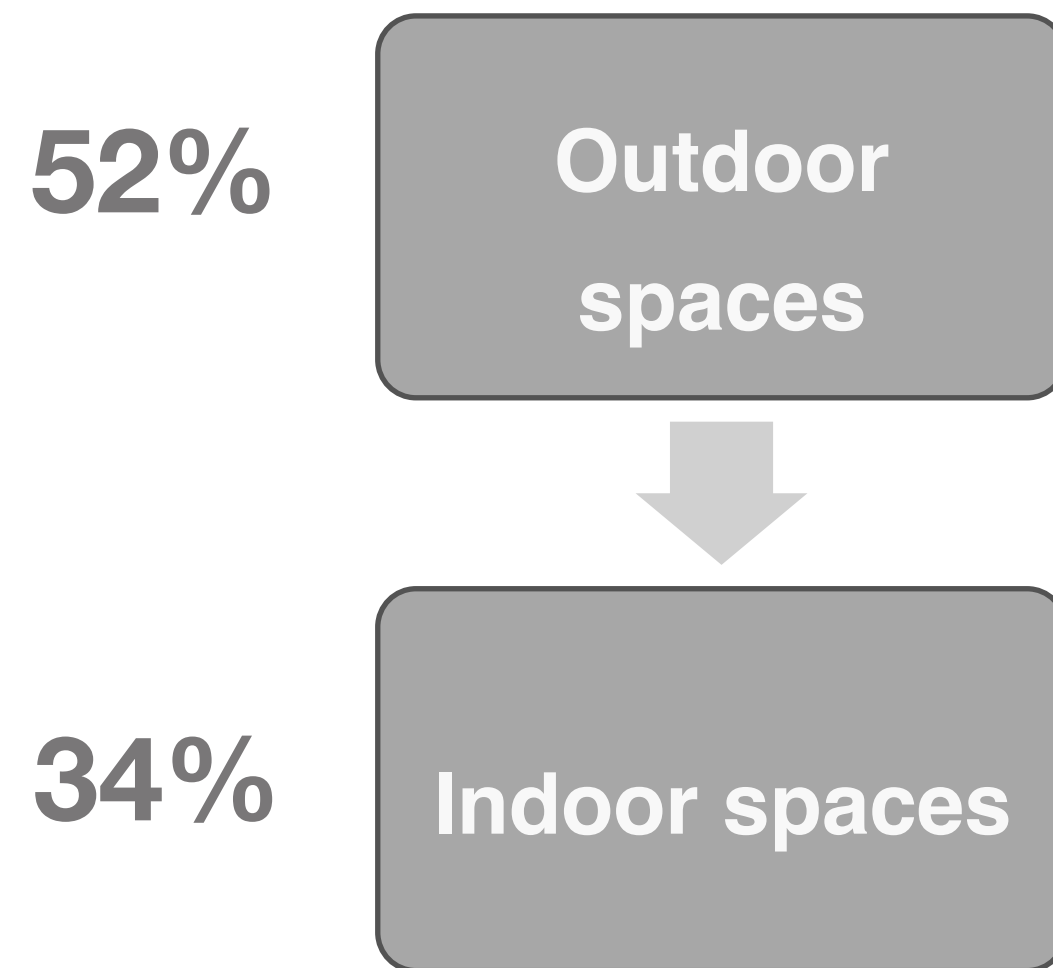
- We asked ‘what stops built environment professionals creating healthier places through their work?’
- Worked in collaboration with Social Change UK
- 658 survey responses, plus 30 interviews

What is done to create healthier places?

- **48% increase walking and cycling**
- **35% decrease car use**



What is done to create healthier places?



What stops healthier places?

**1. Insufficient
funding – 55%**

**2. Accessing
data, and
evaluating
impact – 27%**

What stops healthier places?

**3. Community
engagement**

**4.
Understanding
of healthy
placemaking**

What stops built environment professionals creating healthier places?

5. Systems, policies and processes

- Systems, policies and processes not right
- Vision on healthy placemaking unclear
- Guidance on highways unsupportive

Recommendations

Recommendations

- **Government:** embed healthy placemaking in the National Planning Policy Framework
- **Local Authorities** embed healthy placemaking across all local and neighbourhood plans
- **Practitioners:** promote and demonstrate a firm commitment to healthy placemaking.

Next steps

**Collaborati
on**

Data

**Best
practice**

**Supporting
delivery**

Healthy place making

- **Champion** and commit to achieving an accessible, inclusive environment that supports health and wellbeing in your Strategic Vision
- **Use relevant and diverse expertise** throughout the process and engage and consult effectively with diverse users at every stage
- **In your Project Brief set out what tools, mechanisms and processes** you will use to implement an Inclusive and Health and Wellbeing centred Development Process
- **Structure your Budget** from the outset for implementing your Inclusive and Health and Wellbeing Design Strategy

Further information

designcouncil.org.uk

[#healthypaces](https://twitter.com/healthypaces)